

Industrial Aerators Surface & Subsurface

Otterbine's experience in aquaculture and wastewater treatment is obvious in the performance driven results of our surface and subsurface industrial aeration systems. Constructed from 316 stainless steel, thermoplastics and rugged low speed motors; these systems are designed to withstand the demands of severe aquatic environments. The High Volume is Otterbine's power house providing over 3.3lbs. or 1.5kg of oxygen per horsepower hour and pumping over 920GPM or 198m³ per hour. These systems provide unique solutions to managing water quality, and are available in low profile spray patterns and horizontal mixers.

All Industrial Aerators can operate in as little as 3ft or 92cm of water and are supported by a comprehensive 3-year warranty.



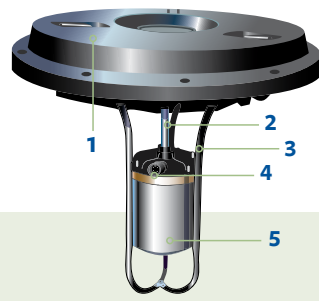
HIGH VOLUME

60 Hz	1HP	2HP	3HP	5HP
Spray Height (ft)	1.5	2	3	4.5
Spray Diameter (ft)	4	7	9	11
GPM	920	1,525	2,100	3,000
50 Hz	1HP	2HP	3HP	5HP
Spray Height (m)	0.5	0.6	0.9	1.1
Spray Diameter (m)	1.2	2.3	2.6	3.5
m³/hr	198.5	329	453.1	647.2



“Otterbine aerator units have been operating in the raw wastewater flow equalization basin for nearly nine-months, maintenance free, but more importantly with no odor complaints. The plant improvement is the first step toward community confidence that a wastewater treatment facility can be a good neighbor.”

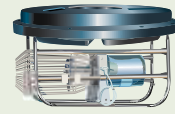
**—John M. Bennett, JR., P.E.,
Director Lagrange Utilities Commission**



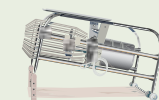
High Volume

PRODUCT ILLUSTRATIONS

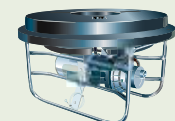
- 1** Rugged closed cell foam filled low visibility polyethylene float.
- 2** Precision pitched stainless steel impeller is virtually unbreakable.
- 3** Protective arms secure motor unit and allow for easy handling.
- 4** Electrical quick disconnect is part of upper plate to prevent accidental damage.
- 5** Enclosed in a corrosion resistant, durable 18 gauge/316 grade stainless steel motor housing, the oil-cooled, efficient 1725/1425 RPM custom built motor has dynamically balanced rotors to move high volumes of water.



Triton Mixer



Sub-Triton Mixer



Triton Aspirator



Sub-Triton Aspirator

Complete package is safety tested, approved and listed with ETL, 60Hz electrical panels conform to UL508a. Products for the European Union are also safety tested, approved, and carry CE certification. See www.otterbine.com for product testing and package details.

Like components used throughout industrial aerators. High Volume is mounted vertically, while Aspirator and Mixer models are mounted horizontally.



MIXERS: TRITON & SUB-TRITON

60 Hz	1HP	2HP	3HP
Volume (ft³) Influenced	490,000	980,000	1,470,000

50 Hz	1HP	2HP	3HP
Volume (m³) Influenced	12,488	24,976	37,463



ASPIRATORS: TRITON & SUB-TRITON

60 Hz	1HP	2HP	3HP	5HP
Volume (ft³) Influenced	210,000	420,000	630,000	1,050,000

50 Hz	1HP	2HP	3HP	5HP
Volume (m³) Influenced	5,352	10,704	16,056	26,760



**Air Flo
Diffused Aeration**

“The Air Flo 3 system is virtually invisible, stealthily quiet and yet highly effective in maintaining an environmentally healthy and aesthetically pleasing high visibility water feature.”

**—Chuck Gast,
CGCS Bellerive CC, St. Louis MO**

The Air Flo 3 is Otterbine’s subsurface diffused aeration system and is one of several choices Otterbine offers when no surface spray is desired. Often referred to as a ‘bubbler’ system, these units operate from quiet on-shore compressors that pump air to diffusers placed at the pond bottom. Oxygen is then released in the form of bubbles throughout the water column, mixing bottom and top water layers breaking down thermal stratification and adding much needed oxygen to the pond.

With no electrical components in the water, these systems are the ideal choice for water quality management solutions in recreational bodies of water. Requiring little to no maintenance, these units are constructed of corrosion resistant materials and can operate in depths from 6ft–40ft or 2m–12m. Independently tested for safety and effectiveness, the Air Flo includes a 3-year warranty on the compressors, 5-year warranty on diffusers and cabinet, and 15-years on tubing.

AIR FLO DIFFUSED AIR

SYSTEM	# of Compressor(s)	Diffuser Pad(s)	# Discs per Pad	# Disc per System
AF3-121	1	2	1	2
AF3-131	1	3	1	3
AF3-141	1	4	1	4
AF3-112	1	1	2	2
AF3-122	1	2	2	4
AF3-241	2	4	1	4
AF3-261	2	6	1	6
AF3-281	2	8	1	8
AF3-222	2	2	2	4
AF3-232	2	3	2	6
AF3-242	2	4	2	8
AF3-262	2	6	2	12

PRODUCT ILLUSTRATION



- Air Flo 3 Diffused Air Systems incorporate 1/2HP oil-less rocking piston compressors allowing for operating depths up to 40ft or 12m.
- All systems come with self-cleaning 12in (350mm) disc diffuser manifolds (single or dual)
- Diffuser manifold base is constructed of high-density polyethylene plastic and incorporate ballast channels for level sinking of pads during installation.
- Enhanced 18 gauge, 304 stainless steel cabinet construction is corrosion resistant, provides quieter operation and simplified servicing.
- Compact and low profile, cabinet footprint for all systems is 16in x 16in x 20.5in (41cm x 41cm x 52cm)
- Cabinet cooling system includes (2) axial fans that draw air through vented louvers on the front and bottom of the cabinet for complete cabinet air exchange at the rate of 225 times per minute.
- Valve manifolds located inside cabinet allow for future expansion of most Air Flo 3 Systems.
- Cabinet enclosure secured by stainless steel latch that accommodates a locking mechanism.

Complete package is safety tested, approved and listed with ETL. Products for the European Union are also safety tested, approved, and carry CE certification. Minimum operating depth varies, visit www.otterbine.com for product testing and package details. For system sizing and selection visit www.otterbine.com/airflo3